



UNIVERSITY OF MISSOURI EXTENSION

Andrew County

2023 ANNUAL REPORT





Office of Extension
and Engagement
University of Missouri

OFFICE OF THE VICE CHANCELLOR
FOR EXTENSION AND ENGAGEMENT
108 Whitten Hall
Columbia, MO 65211
PHONE 573-882-2394
EMAIL: cchiggins@missouri.edu

December 2023

Dear county commissioners and friends of MU Extension and Engagement,

Thank you for your important partnership with the University of Missouri Extension this past year.

I want to highlight three areas that address needs you helped us identify.

You may recall that the FY 23 state budget provided a one-time \$5 million infusion to MU Extension for growth. Of that, we allocated about \$3 million for field faculty in the areas of agriculture, 4-H, health/human development and business and community development.

Through a dedicated hiring effort, and thanks to that allocation, we have hired 168 new employees since November 2022. That includes 72 academic/faculty members, most of whom are field specialists in a priority area noted above, and 96 staff members (e.g., office administrators, youth and food and nutrition associates, etc.).

We also returned more faculty to local program delivery that best serves your county's needs, while preserving the partnership and relationship building work you value. Our extension and engagement specialists focus full-time on that work as they serve their assigned multi-county groups. Currently, 19 have been hired, with two more in the pipeline.

Finally, we are prioritizing our work with county extension councils. In the new role of partnership and council development director, Lorin Fahrmeier focuses on strengthening council representation and governance. This role will build stronger links with regional, educational and campus leadership to better identify and address local priorities.

At the UM System level, our engagement work across four universities and with leaders across the state makes a difference in areas of greatest need: broadband, workforce development, health access, food security and healthy futures for our youth.

Your county annual report shows what we are accomplishing together as we Serve Missouri and Deliver Mizzou. We look forward to strengthening that partnership with county commissioners and community stakeholders in the coming year.

Sincerely,

Chad Higgins, PhD
Interim Vice Chancellor, MU Extension and Engagement
Chief Engagement Officer, UM System

Who we are

Faculty and staff



James Humphrey
Field Specialist in Livestock

Rachel Livesay
Field Specialist in Nutrition & Health

Valerie Pickering
Nutrition Program Associate

Kelly Todd
4-H Youth Program Associate

Kathy Hoffman
Office Manager

Also Serving Andrew County:

Rachel Brown
Field Specialist in Community Health

Katie Buchs Pemberton
Field Specialist in Human Development

Jim Crawford
Field Specialist in Agricultural Engineering

Annette Deering
Field Specialist in 4-H Youth Development

Randa Doty
Extension Engagement Specialist

Denice Ferguson
Field Specialist in Agricultural Business

Wayne Flanary
Field Specialist in Agronomy

Gwen Funk
Field Specialist in Horticulture

Connie Griffith
Nutrition Program Manager

Jackie Spainhower
Field Specialist in Community Development

Stacey Steffens
Northwest Regional Director

Council members

Ernie Nold II, Chairman

Ashley Petty, Vice-chairman

Theresa Wright, Secretary

Gary Baumann, Treasurer

Jerry Baker, City of Savannah

Ruth Dunn

Fran Hegeman

Robert Jandorf

Cindy Stone

Dennis Williams

Raegan Williams

Cheryl Wyckoff



County commissioners

Brad Jarvis, Presiding Commissioner

Fritz Hegeman, East District Commissioner

Gary Baumann, West District Commissioner



Budget and more

Appropriations budget

Income

County Appropriations	49,274
Total Income	\$49,274

Expenses

Salaries/Benefits	27,691
Travel	2,968
Postage	401
Telephone	1,054
Supplies/Service	1,295
Fairground Maintenance	6,058
Other Contract Services	428
Insurance	1,594
Extension Council Election Expense	119
Repairs/Maintenance	971
Total Expenses	\$50,677



University of Missouri Faculty and Staff at the Hundley Whaley Field Farm and Family Day in September. This event showcased demonstrations on the Hundley Whaley Extension & Education Center. Tours of the farm, projects, and workshops were featured for the community and partners.

Contact Us:

University of Missouri Extension in Andrew County

411 Court St.

PO Box 32

Savannah, MO

816-324-3147

AndrewCo@missouri.edu

Office Hours – Monday - Friday

8:00 a.m. – 4:30 p.m.

Closed for lunch noon to 12:30

MU Extension is a unique funding partnership.

Extension funding is a three-way partnership of federal, state and county government. Federal and state money, through the University of Missouri system, pay professional staff salaries, training costs, computers and communication equipment. County funds support the local office, secretarial and youth assistant salaries, staff mileage and council expenses.

The Andrew County Extension Council, faculty and staff would like to express our appreciation to the Andrew County Commissioners for their continued support of extension programs.



Local Support

Did you know you can donate directly to Andrew County Extension with a gift to be used immediately or as an endowment contribution for long term efforts. Monies put into the endowment are left forever to earn interest with the county office benefiting each year. You can also direct your donation to a specific program such as 4-H or Master Gardeners.



Missouri 4-H Positive Youth Development

Andrew County Fair

4-H Achievement Day: 33 youth, 98 exhibits, 22 exhibits selected for state fair



Andrew County 4-H members had a great time participating in the Savannah Homecoming parade this year. Even their 4-legged friends joined in the fun!

4-H Participation Report

The following numbers were taken from 4-H Online, for the 4-H year October 1, 2022 - September 30, 2023:

- ✓ Youth members of organized 4-H community clubs: Andrew 74.
- ✓ Total number of adult volunteers: Andrew 12.
- ✓ Total number of youth volunteers: Andrew 1.

Two Rivers 4-H Day Camp

Participants: 16 youth campers ages 5-12, and 2 teen helpers (2 Andrew, 1 Atchison, 1 Holt, 14 Nodaway.)

Theme: Space. "4-H is Out of this World"

Learning objectives:

- Youth learned about the solar system and planets, They made solar system mobiles, and galaxy jars.
- Youth learned about astronauts. They tasted astronaut ice cream, and learned about foods that astronauts eat while in space.
- Youth learned about rockets. They made and launched rockets, using plastic water bottles, straws, vinegar, and baking soda.



One of the highlights this year for the 4-H International Foods project members, was having visitors from Mexico teach them how to make Spanish rice, refried beans, flour tortillas and chile relleno.

Youth Leadership

One of the goals from the Missouri 4-H 2023 Plan of Work was to grow youth leadership in the counties. To accomplish this goal, Annette, Dana, Kelly, and Pam transitioned adult-led 4-H councils to youth-led 4-H councils, in Andrew, Atchison, Holt, Nodaway, and Worth counties. This transition should offer youth multiple opportunities for leadership roles



On-Farm Producer Trials

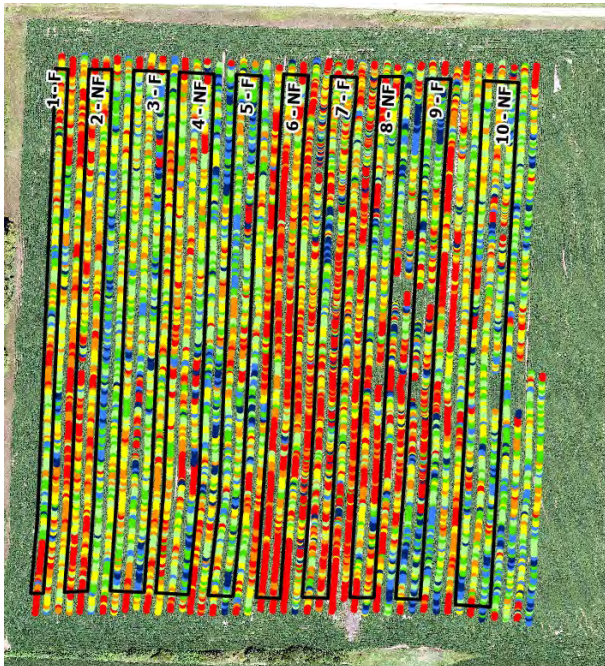
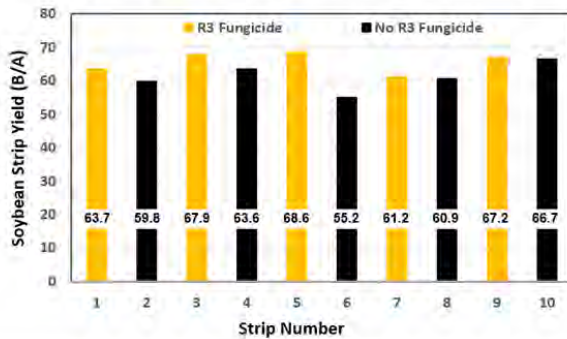
Soybean R3 Fungicide Trial

Site 2303

Andrew County

There is a high probability that R3 fungicide application increased yield. There is an 85% probability it increased yield 1 B/A and a 50% probability it increased yield more than 4.5 B/A.

Treatments	Mean (SD)	Delta Control
<i>bushels/acre</i>		
All strips	63.5 (4.3)	—
Control (N)	61.2 (4.3)	--
R3 Fungicide (F)	65.7 (3.2)	+4.5



MU works with producers across the state with on-farm trials. Above, this example contains data of the 2023 results of a producer located in Andrew County.

AG Updates and Private Pesticide Applicator Training

This training educated crop producers for safe handling and application of restricted use pesticides. Participants learned about pest identification, economic thresholds and injury levels, emergency planning procedure and the environmental ramification of improper pesticide application. More than 270 participants initiated or renewed a license, including 24 in Andrew County. Ag staff then followed Private Applicator Training with “hot topics” in fields of ag in Horticulture, Ag Engineering, Agronomy, Livestock and Ag Business. Further regional Private pesticide applicator training was held monthly in Buchanan County reaching an additional 33 producers.



Determining if Garden Insects are Pests or Beneficial



Soldier Beetle on garden plant: a **beneficial pollinator**—no need to spray!

“Thank you so much. I am very relieved by that good news!”



Impact of using Production Records in a Commercial Cow/Calf Operation

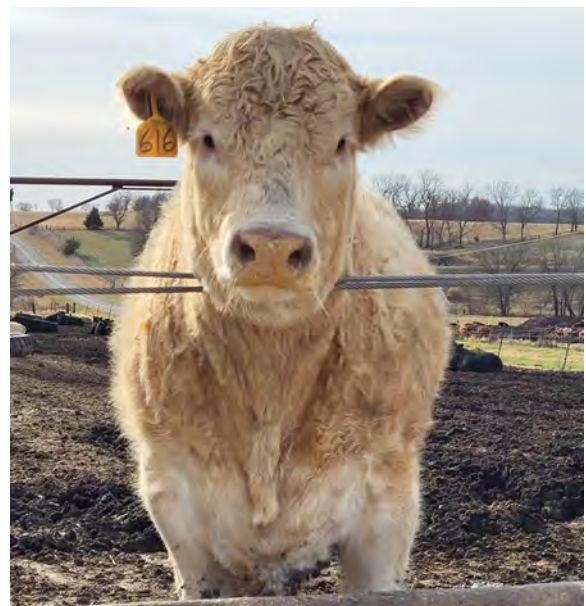
Missouri ranks number three in number of beef cows in the United States with close to 1.9 million beef cows. A pilot project is designed to demonstrate the positive impact using production records can have on commercial cow/calf operations in northwest Missouri with a special emphasis on calf weight at weaning as a percent of cow weight. Information generated during this project is being used to create deliverables for a statewide program educating cow/calf producers on the importance of individual cow and calf weights, especially when management decisions need to occur in a timely fashion. Specifically, cows that are larger with higher maintenance requirements (Lalman et al., 2018), do not necessarily wean calves that are heavier. To investigate this, we collected data over a three-year period from three spring calving beef operations located in northwest Missouri representing over 400 breeding age beef females. Cow weights, body condition scores, docility scores, and pregnancy status, were recorded each time, cows went through the chute. Calf weights were recorded in late spring and at weaning time. Additionally, calf weight as percent of cow weight was calculated for each cow/calf pair. Over the three-year period cow weights ranged from 750 lbs. to 1865 lbs., calf weights ranged from 228 lbs. to 758 lbs., and calf weight as percent of cow weight ranged from 15.9% to 71.3%. With the continued conversion of grazing and forage ground to cropland, optimizing cow efficiency is important for commercial cow/calf operations and we suggest cow/calf producers consider percentage of cow weight weaned when making management decisions. Adoption, of these practices will increase productivity contributing to the overall goal of doubling the economic impact of agriculture in Missouri by 2030.



Beef Cow Size and Record Keeping Project weigh day.



Heifers grazing stockpile in December 2023





Agriculture & Environment

On Site Septic Systems

- ✓ The most common question this year was septic lagoons going dry from the drought and what should they do. Each is slightly different, but the general recommendation is to add water to maintain its function and to keep the bottom seal from cracking and causing leaks in the future.
- ✓ The average cost to replace a septic system is approx. \$20,000. By taking some simple preventative steps, a current system can be maintained, safely processing wastewater from the home and saving the owner the replacement costs.



A diagram of how an on-site septic system works when incorporating a lagoon in place of a leach field

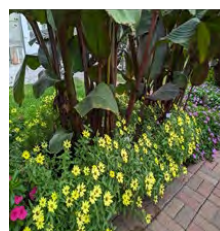
Tar Spot in Corn

Estimated losses to this corn disease between 2018 and 202 are approximately 242.6 US million bushels, which is approximately \$900 million. Yield losses are due to reduced grain fill, kernel abortion and reduced test weight. MU requested field specialists in agronomy monitor Tar Spot spread and severity. It is now in my assigned counties and growers should be prepared for a plan of action next year. More than 65 producer phone calls and conversations were had regarding this new corn disease.



Horticulture Benefits Communities

- Horticulture, the science and art of cultivating fruits, vegetables, flowers, and plants, plays a pivotal role in benefiting communities in multifaceted ways:
- Horticulture contributes to food security by providing communities with a diverse range of fresh and nutritious produce by promoting healthier lifestyles and reducing dependence on external food sources
- Community gardens and shared horticultural spaces foster social cohesion, bringing people together to cultivate a sense of belonging and shared responsibility
- Beyond the social aspect, horticulture enhances:
 - environmental sustainability of communities by promoting green spaces
 - reducing urban heat islands and supporting biodiversity
- Additionally, horticultural activities often provide therapeutic benefits, promoting mental well-being and stress reduction. Overall, horticulture not only addresses practical needs but also enriches the fabric of communities, fostering health, connectivity, and environmental stewardship.



Example of "green mulch"



Example of a well-organized and maintained community garden



Business & Community

Connecting Entrepreneurial Communities

MU Extension's annual Connecting Entrepreneurial Communities (CEC) Conference was held in Benton County, September 19-21, with 114 participants attending, including individuals from northwest Missouri communities. The conference featured over 25 sessions meant to foster, promote, and support entrepreneurship in rural Missouri communities.



Next year's CEC will be held September 17-19, 2024, in Fulton, Missouri.



"This has been the best most impactful conference ever! Hosting the seminars in actual businesses was perfect."

NWMO VITA Tax Preparation

The 2023 NWMO VITA Tax preparation program offered free tax prep to people needing assistance filing their 2022 tax returns. The NWMO VITA program allowed low income, disabled, and older clients to get their returns prepared for free when they didn't feel comfortable using free online resources themselves. They did not have to pay a preparer upfront for the service which may have prevented many of them from getting their taxes prepared. The program provided education on their return and each client was shown where the money was coming from, whether it was a refund of taxes overpaid, or an Earned Income Credit. If a client owed taxes, we helped them understand why they owed additional taxes and advised them to talk to their employer about having additional funds withheld from their paycheck to avoid penalties for underpayment.

Eight volunteers from communities across the region partnered to offer 24 free 2022 income tax preparation sites in 12 different counties in the region. Volunteers spent 377 hours preparing 263 tax returns in Northwest Missouri. Cost savings to taxpayers (\$200 per tax return) is \$52,600. Total federal refunds in northwest Missouri was \$126,116, with \$56,980 being returned from the state. In Andrew County, 2 people took advantage of this service.

Extension
University of Missouri

Free Personal Income Tax Preparation

MU Extension is offering FREE tax return assistance for the 2022 tax year through IRS's Volunteer Income Tax Assistance (VITA) program in northwest Missouri.

MoTax



Health & Human Sciences

100 Miles, 100 Days

This year's 100 Miles, 100 Days Extension initiative made a significant impact statewide, attracting over 1,300 participants in Missouri, including 3 from Andrew County and more than 240 in our Northwest Region. Throughout the 100 days of summer, participants were urged to discover their own enjoyable ways to cover the equivalent of 100 miles. The diverse activities reported ranged from hikes and bike rides to navigating wheelchairs through MO State Parks. Individuals embraced the initiative by strolling through their neighborhoods, fostering active connections with friends and family, and making the most of local parks and pools.

Our weekly motivational emails provided valuable education and fueled a friendly county competition, adding a bit of excitement into the challenge. Whether participants reached the coveted 100 miles or not, the ultimate goal of our initiative was to instill a lasting enjoyment of movement through a blend of encouragement, accountability, and motivation. Our hope is that the impact of this program will extend far beyond the 100 days, inspiring a continued commitment to a healthy and active lifestyle.



Missouri Telehealth Network Collaboration

In 2023, much of the work in CHEO was preliminary as it is a rapidly developing program area. One such development is a promising collaboration with Missouri Telehealth Network. CHFS will work with Show-Me ECHO to fine tune community focused ECHO sessions as well as promote the program to healthcare providers and other professionals, enhancing access to experts of specialized care topics.



The Community Health Engagement and Outreach team attended a staff retreat in October to identify ways in which we can best serve Missourians.

Stay Strong, Stay Healthy

This program was offered at Joyce Raye Patterson 50+ Activity Center and was the first program Rachel offered. Participants learned and completed evidence-based strength training exercises which helped to improve strength, balance, and flexibility.

There were 10 participants, with 4 being new to the program. Participants said the program “helped with balance; easier to get out of chair,” as well as saying, “it has helped me feel stronger and letting me know that I need to be moving and exercising more!!”



SSSH participants performing the toe stand exercise during class.

Health & Nutrition Outreach



Handing out SNAP Ed reinforcements at Back to School Fair.



Handing out Missouri grown popcorn at 4-H Trunk or Treat.



Participating in the SHS Homecoming Parade.



Serving samples at Hundley Whaley Field Day.



Presenting to Head Start employees.



Health & Human Sciences

SNAP-Education

The Supplemental Nutrition Assistance Program Education (SNAP-Education or SNAP-Ed) brought \$10,874,798 in federal funds to Missouri. During FY2023, Missouri's SNAP-Ed program reached over 78,000 Missourians through direct classroom education. Each person participated in an average of 6 hours of education totaling over 15,000 hours. In addition, an additional 760,135 persons participated in indirect education. Direct and indirect education resulted in over 1.8 million total contacts with Missourians.

A total of 181 participants were from Andrew County.

Participants in SNAP-Ed learn the importance of making healthier meals and snack choices, eating breakfast more often, are more willing to try new foods, increase their physical activity, and make healthier food choices. Those who practice healthy eating and are physically active are more likely to contribute to a healthy labor force and enjoy a high quality of life throughout the lifespan.

This vital programming effort also reduces healthcare costs over the participant's lifetime, saving taxpayer money in reduced public healthcare benefits and insurance premiums.

Participating schools and agencies include:

- ✓ North Andrew Elementary
- ✓ Avenue City Elementary
- ✓ Andrew County Health Department
- ✓ Andrew County Food Pantry

Success Story

There were several positive comments made during the Andrew County Back to School Fair held at the Savannah United Methodist Church. Participants expressed appreciation that MU Extension was back in the community helping! Many connections were made leading to future Family Nutrition Education Program classes while learning about the needs of the community members!



Valerie Pickering sharing SNAP-Ed materials with participants at the Andrew County Health Department Health Fair.

EFNEP

The Expanded Food and Nutrition Education Program (EFNEP) brought \$1,626,730 federal funds to Missouri. These funds were used to enroll 526 limited-resource families in nutrition education and meal preparation classes, representing 1,926 family members. Additionally, 1,980 youth were enrolled in EFNEP classes.

Eleven of these youth participants reside in Andrew County.

Participants in EFNEP learn the importance of making healthier meals and snack choices, eating breakfast more often, trying new foods, increasing their physical activity, and making healthier food choices. Those who practice healthy eating and are physically active are more likely to contribute to a healthy labor force and enjoy a high quality of life throughout the lifespan.

This vital programming effort also reduces healthcare costs over the participant's lifetime, saving taxpayer money in reduced public healthcare benefits and insurance premiums.



County highlights



Danny & Teri Lightle - 2023
Missouri Century Farm recipients



The Andrew County Extension Council participated in the MU Day of Service on September 28th by putting together breast cancer support bags for patients at the Mosaic Oncology Center.



Jeff, Megan and Lula Baumann represented Andrew County at the Missouri State Fair during the 66th annual Missouri Farm Family Day on August 14th.



Roger & Kim Lightle - 2023
Missouri Century Farm recipients