



UNIVERSITY OF MISSOURI EXTENSION

Bollinger County

2023 ANNUAL REPORT





Office of Extension
and Engagement
University of Missouri

OFFICE OF THE VICE CHANCELLOR
FOR EXTENSION AND ENGAGEMENT
108 Whitten Hall
Columbia, MO 65211
PHONE 573-882-2394
EMAIL: cchiggins@missouri.edu

December 2023

Dear county commissioners and friends of MU Extension and Engagement,

Thank you for your important partnership with the University of Missouri Extension this past year.

I want to highlight three areas that address needs you helped us identify.

You may recall that the FY 23 state budget provided a one-time \$5 million infusion to MU Extension for growth. Of that, we allocated about \$3 million for field faculty in the areas of agriculture, 4-H, health/human development and business and community development.

Through a dedicated hiring effort, and thanks to that allocation, we have hired 168 new employees since November 2022. That includes 72 academic/faculty members, most of whom are field specialists in a priority area noted above, and 96 staff members (e.g., office administrators, youth and food and nutrition associates, etc.).

We also returned more faculty to local program delivery that best serves your county's needs, while preserving the partnership and relationship building work you value. Our extension and engagement specialists focus full-time on that work as they serve their assigned multi-county groups. Currently, 19 have been hired, with two more in the pipeline.

Finally, we are prioritizing our work with county extension councils. In the new role of partnership and council development director, Lorin Fahrmeier focuses on strengthening council representation and governance. This role will build stronger links with regional, educational and campus leadership to better identify and address local priorities.

At the UM System level, our engagement work across four universities and with leaders across the state makes a difference in areas of greatest need: broadband, workforce development, health access, food security and healthy futures for our youth.

Your county annual report shows what we are accomplishing together as we Serve Missouri and Deliver Mizzou. We look forward to strengthening that partnership with county commissioners and community stakeholders in the coming year.

Sincerely,

Chad Higgins, PhD
Interim Vice Chancellor, MU Extension and Engagement
Chief Engagement Officer, UM System

Who we are

Faculty and staff



Stephanie Schindler
Extension and
Engagement Specialist



Shanna Sorg
Field Specialist in
Community Health



Vickie Seiler
Nutrition Program Associate



Willie Saputo
Youth Program Associate



Kristy Mayfield
Administrative Assistant

Other Faculty Serving Bollinger County

Genevieve Mendoza – 4-H
Donna Aufdenberg – Horticulture
Anthony Ohmes – Agronomy
David Reinbott- Agriculture Business
Bethany Bachman – Nutrition and Health
Sarah Denkler – Regional Director
Sarah Higgins – Natural Resources
Audrey Johnson-Human Development & Family Sciences

Council members

Barb Bailey, Chairperson
Judson Mayfield, Vice Chairperson
Sheila Porter, Treasurer
Darlene Bollinger, Secretary
Jody McCormick
Nikki Wolfe, Farm Bureau Representative
Becky Wiginton
Diane Dowdy
Shelly Garner
Caitlin Morgan
Taylor Eftink Wilkinson
Michael Wolfe, Youth Representative
Conner Lincoln, Youth Representative
Leo Arnzen, Presiding Commissioner

The Bollinger County Extension, faculty and staff would like to express our deep appreciation to the Bollinger County Commissioners for their continued support of MU Extension programming.

County commissioners

Leo Arnzen, Presiding Commissioner
Tim Shelby, First District
Chad Hulvey, Second District

Budget and more

Appropriations budget

Income

County Appropriations \$28,500

Expenditures

Personnel Salary/Wage \$24,552

Travel \$1,848

Communications \$2,950

Supplies/Services \$800

Equipment/Maintenance \$2,400

Insurance \$550

Election \$200

Total Expenses \$33,300

Key outcomes and numbers

The University of Missouri Extension 4-H Youth Development Program reached 150 youth in Bollinger County during 2023 through activities and membership in traditional clubs.

The Family Nutrition Education Program (FNEP) had 702 direct and indirect contacts through programming in Bollinger County in 2023.

A total of 255 agronomic soil tests were reviewed and 140 producers were contacted through one-on-one education in Bollinger County.

The Bollinger County Community Garden received supplies totaling \$3,621.81 from the Community Services Block Grant (CSBG) funding in 2023.

Supporting the University of Missouri is an investment in the future of Missouri.

MU Extension is a unique funding partnership.

Extension funding is a three-way partnership of federal, state and county government. Federal and state money, through the University of Missouri system, pay professional staff salaries, training costs, computers and communication equipment. County funds support the local office, secretarial and youth assistant salaries, staff mileage and council expenses.

The Bollinger County Extension Council, faculty and staff would like to express our appreciation to the Bollinger County Commissioners for their continued support of extension programs.



Local Support

Did you know you can donate directly to Bollinger County Extension with a gift to be used immediately or as an endowment contribution for long term efforts. Monies put into the endowment are left forever to earn interest with the county office benefiting each year. You can also direct your donation to a specific program such as 4-H or Master Gardeners.

County highlights

Bollinger County Extension Activities



Bollinger County Resource Fair

Pictured Above: Jewell, Millie, Jake, and Eli had a great time at the Extension booth at the Bollinger County Resource Fair. The photo booth was a big hit! Participants also enjoyed getting seeds to plant.



Left: Vickie Seiler, FNEP, showing fair participants some photo props at the Bollinger County Resource Fair.



University of Missouri Extension-Bollinger County participated in the Ladies' Tea sponsored by the Bollinger County Chamber of Commerce. The event was held at the Mayfield Event Center in Marble Hill, MO on June 17, 2023. Proceeds from the tea party were donated to the Marble Hill Food Pantry.

Back-to-School Fair



Vickie Seiler, FNEP, sharing nutrition information and recipes with families attending the Back-to-School Fair.

Bollinger County Library Summer Reading Party



The Bollinger County Library Summer Reading Program hosts community organizations to participate in a story hour event. FNEP, Vickie Seiler, presented the summer readers with a book, "From the Farm to You", a pencil, and healthy summer snack recipes.



County highlights

MU Extension County Leaders Honor Roll



The staff of the Bollinger County Extension office has the honor of choosing an individual who they feel has contributed significantly to the quality of life in the county. This year the staff chose Becky Trehy for her extensive work with Community Gardens and EMAA with tornado and flood relief supplies.

2023 Bollinger County Extension Leaders Honor Roll Recipient, Becky Trehy

Bollinger County State Fair Farm Family



Congratulations to the Whaley family - Mark, Laurie, Lydia, Harley and Owen who were honored at the 66th annual Missouri Farm Family Day, August 14 at the Missouri State Fair. The Whaley Family was selected as the 2023 Bollinger County Extension Farm Family. Thank you to the Whaley Family for representing Bollinger County!

Missouri Century Farm Recipients



LEFT: Beussink Family Farms, Stuart & Amy Beussink and family RIGHT: Circle Y Ranch Yount Farms, Dustin and Kassi Yount and family pictured receiving their Missouri Century Farm certificates and signs to display at their farms. Not pictured: The James Bangert Farm, Sedgewickville, MO, also received the Missouri Century Farm certificate and sign for 2023.

In 1976, Missouri's Centennial Farm project awarded certificates to persons owning farms that had been in the same family for 100 years or more. The MU College of Agriculture, Food and Natural Resources and MU Extension planned a 10-year update in 1986 called the Century Farm program. Since then, the program has been an annual event, recognizing more than 100 farms each year. In 2008, the Missouri Farm Bureau became a program co-sponsor.

Since 1976, the program has recognized more than 8,000 Missouri Century Farms.

For more information, visit the program's webpage at <https://extension2.missouri.edu/programs/century-farms>.



County highlights

Bollinger County 4-H

The University of Missouri Extension 4-H Youth Development Program reached more than 150 youth in Bollinger County during 2023. 4-H offered educational experiences for youth to build skills for a lifetime, gain access to hands-on projects and leadership experiences. Youth learned-by-doing under the guidance of adult and youth volunteers, who taught programs in a wide variety of project areas. Youth and families were involved in 4-H programs which included five traditional 4-H Clubs and county-wide project clubs for Sportfishing, Shooting Sports and Robotics – which enabled them to participate in a wide variety of projects. Livestock project members were able to show their animals at several fairs and several sold animals at the SEMO District Fair in September. We had one member showing livestock at the Missouri State Fair. Several 4-H members participated in fairs through out the region, as well as in other states. Community service tasks were selected and completed by all clubs. Two club members at Leopold, Connor Lincoln and Carsyn Swain, were awarded 4-H Scholarships



Country Club 4-H, (left and middle) and Patton 4-H (right) showing livestock at the SEMO District Fair.



Carsyn, member of Leopold 4-H, received a scholarship from the 4-H Foundation.



Crooked Creek 4-H Club volunteering to help display flags for Veteran's Day at Bollinger County Memorial Park.





County highlights

Bollinger County 4-H



Bollinger County 4-H members, Byran, Harley, and Ronin along with YPA, Willie Saputo, worked on the Memory Garden at the Stars & Stripes Museum in Bloomfield, MO.



Leopold 4-H Club participating in Clover Kids Craft night.



Amya from the Patton 4-H Club is doing a demonstration on making cloud dough.



Jacob Bollinger showing Angus cattle at the 2023 Missouri State Fair. Jacob is a member of the Cheerful Workers 4-H Club.



Michael from Leopold 4-H Club showing his swine at the 2023 SEMO District Fair.



Crooked Creek 4-H member, Josie, earned top honors in poultry at the SEMO Fair.

County highlights



**Left:
Participants
at Extension
Tax School**

**Bollinger
County had
one attendee
for 2023**

Extension Tax School

University of Missouri Extension ag economics department and ag business specialists worked together to coordinate one summer and three fall tax schools. The summer school was in person and live online. Fall schools were in Columbia and Springfield and in addition a was online. The schools were designed for those who prepare taxes including enrolled agents, tax preparers, CPAs, individuals, and attorneys.

The training included updates on legislation, rulings and cases, individual taxpayer issues, agricultural and natural resources topics, ethics, trusts and estates, agriculture and natural resource tax issues, business tax issues, business entity tax issues, IRS issues, penalties and defenses, form 4797 sales of property, retirement tax issues, like-kind exchange issues. The schools were approved for 8 and 16 hours of continuing education credit by the IRS, Missouri Bar and for CFP continuing education. Total continuing education hours reported to IRS for the schools was 3,336 hours.

The teaching teams included a CPA and former IRS stakeholder liaison, an IRS certified retired ag economics professor, an attorney, Missouri Department of Revenue and extension ag business specialists.

The trainings received positive evaluations and planning is underway to offer trainings in 2024. Local county residents benefit when local tax preparers have the opportunity to gain knowledge, which benefits their clients and communities. The tax schools are a program of the ag business and policy program of MU Extension, coordinated by Mary Sobba with help from a team of ag business specialists throughout the state.

The resources for the schools included the IRS, the National Income Tax Workbook from the Land Grant University Tax Education Foundation, and materials written by the instructors.

The 2023 school attendance totaled three hundred twenty-seven people. The participants were from throughout Missouri.



Health & Well-being

Family Nutrition Education Program

SNAP-Ed Public Value Statement 2023

The Supplemental Nutrition Assistance Program Education (SNAP-Education or SNAP-Ed) brought \$10,874,798 in federal funds to Missouri. During FY2023, Missouri's SNAP-Ed program reached over 78,000 Missourians through direct classroom education. Each person participated in an average of 6 hours of education totaling over 15,000 hours. In addition, an additional 760,135 persons participated in indirect education. Direct and indirect education resulted in over 1.8 million total contacts with Missourians.

A total of 702 participants were from Bollinger County.

Participants in SNAP-Ed learn the importance of making healthier meals and snack choices, eating breakfast more often, are more willing to try new foods, increase their physical activity, and make healthier food choices. Those who practice healthy eating and are physically active are more likely to contribute to a healthy labor force and enjoy a high quality of life throughout their lifespan. This vital programming effort also reduces healthcare costs over the participant's lifetime, saving taxpayer money in reduced public healthcare benefits and insurance premiums.



Vickie Seiler, NPA, participated in the Missouri Crunch off with elementary and 4-H students.

EFNEP Public Value Statement 2023

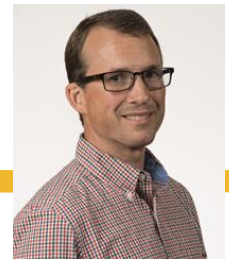
The Expanded Food and Nutrition Education Program (EFNEP) brought \$1,626,730 federal funds to Missouri. These funds were used to enroll 526 limited-resource families in nutrition education and meal preparation classes, representing 1,926 family members. Additionally, 1,980 youth were enrolled in EFNEP classes.

14 of these youth and adult participants reside in Bollinger County.

Participants in EFNEP learn the importance of making healthier meals and snack choices, eating breakfast more often, trying new foods, increasing their physical activity, and making healthier food choices. Those who practice healthy eating and are physically active are more likely to contribute to a healthy labor force and enjoy a high quality of life throughout their lifespan.

This vital programming effort also reduces healthcare costs over the participant's lifetime, saving taxpayer money in reduced public healthcare benefits and insurance premiums.

County highlights



Economic Opportunity

2023 MU Extension Crop Conference

The 2023 Regional Crop Conference was held at the Miner Convention Center during January. Participants from 11 MO counties, including Bollinger County, and two other states were presented research-based information in market outlook, commodity organization updates, soybean and corn disease management, weed management and nutrient management.

Over 100 attendees rated the overall value from the information provided at 8.0 average out of a maximum of 10.

When asked what changes would be made as a result of the information provided the responses included:

- 1) Marketing crops;
- 2) Herbicide and weed control options;
- 3) Plant soybeans earlier;
- 4) Crop rotations.

Overall, the research-based education increased overall knowledge in the topic areas which will lead to informed decisions that can help implement changes in management practices. Therefore, improving the economic viability of farm operations.



MU Crop Conference Meeting.

University of Missouri Grazing Schools



John Turner teaching at the Spring Grazing School

University of Missouri Extension offered two grazing schools in the SE region of Missouri. The Fall grazing school was hosted in Cape Girardeau County. A total of 37 participants from across SE MO, including Bollinger County, learned various aspects of managed intensive grazing (MiG) over 3 days.

Missouri's 7.1 million acres of permanent pasture provide feed for the state's 1.9 million cows (2018 data). Pasture yield and quality, in turn, drive the productivity of Missouri's beef industry. Over the past 30 years, public agencies in Missouri have devoted extensive effort toward educating and incentivizing producers to adopt improved grazing management practices. These efforts raise the economic output of Missouri's beef industry by more than \$125 million every year.

Participants overall indicated an increase in knowledge and plan to incorporate one or more aspects of managed intensive grazing (MIG). 85% of participants indicated their knowledge of MIG increased and 91% of participants plan to adopt or currently practice rotational grazing management.

County highlights



Economic Opportunity

Soil Nutrient Management and Pest Management

Field Specialist in Agronomy, Anthony Ohmes, provided direct and indirect one-on-one education to producers, consultants and other ag related clients. One-on-one education is one of the most impactful ways to reach producers. One-on-one, clients are engaged and make changes to improve their forage or row crop production be it through soil test results and consultation, crop diagnostics or pest identification and control. MU Extension continues to meet the educational needs of Missouri producers, consultants and all who support Missouri agriculture by providing research-based information and expertise to individuals when and where they need it. In return, participants remain engaged in learning and making changes based on information provided.

A total of 255 agronomic soil tests were reviewed and 140 producers were contacted through one-on-one education in Bollinger County.



Corn field visit.



Educational Access & Excellence

Private Pesticide Applicator Training

Under the Missouri Pesticide Use Act, University of Missouri Extension provides education to private pesticide applicators in the core competency areas of pest management, environmental stewardship and personal protection. Specifics include the importance of scouting for pests and evaluating implemented plans, understanding the label, and protecting exposure routes from poisoning with personal protective equipment. A private applicator is defined as any individual who is certified by the director as authorized to use, or to supervise the use of, any pesticide which is classified for restricted use for purposes of producing any agricultural commodity on property owned or rented or on the property of another person, if used without compensation other than trading of personal services between producers of agricultural commodities, on the property of another person.

One in-person training event was held in Bollinger County. Additionally, multiple online trainings through Zoom were offered and trainings were provided on-demand at the local extension office. Twenty (20) applicators received certification/recertification. Survey of participants indicated an increase in knowledge of IPM, understanding the label and pesticide safety. On a scale of 1 to 7, the knowledge prior to training averaged 4.9 and after training increased to 6. When asked if they would use or change due to training the average was 6. Overall presentation and presenter rating was 6.5. As far as changes indicated specifically, participants included personal protective equipment (respirator) and better records. Private applicator training and the information provided is vital for the wellbeing of our producers and our environment.

For information on University of Missouri Pesticide Applicator training contact MU Extension or refer to our website:

<https://extension.missouri.edu/programs/pesticide-applicator-training>

County highlights

Agriculture and Environment



Sheep & Goat Field Day

Forty-nine (49) producers attended November 17th at Mt. Vernon, MO. They learned about production and financial management for sheep and goat farms. Participants also learned how to perform FAMACHA and 5-point checks.

Topics included: Forage & Pasture Management, Integrated Parasite Management Control, Economic Impact of Low Performing Animals, FAMAHCA system & 5-point Check lecture & hands on certification.

“Very relevant, everything directly applied to our goat operation!”





Educational Access & Excellence



Horticulture Programming in the Southeast Region

Donna Aufdenberg, Field Specialist in Horticulture

In 2023, there were 1580 direct contacts (participants) through gardening programs where participants were actively engaged in the learning process. Programs were in-person and online. Participants learned about planning the vegetable gardening, planting flower and shrubs, growing and using culinary herbs, native plants, growing specialty crops hydroponically, container gardening, high tunnel and greenhouse basics, seed saving, gardening pests and many more topics.

There was a continued interest in home vegetable gardening in 2023 due to concerns about food security and food costs. Many new gardeners learned about growing their own food, increasing consumption of healthy food, exercising caution in the garden during extreme heat and drought and the diligence required to plant and maintain a garden.

Horticulture

/ˈhɔːrdəkəlCHər/

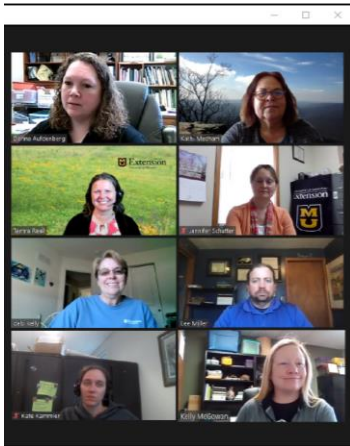
Noun 1. the art or practice of garden cultivation and management

1580+
Participants
in 60+
Programs

1,000+
One-on-One
Education
➤ Calls and
Emails
➤ Walk-ins

Top Gardening Requests

Vegetable Gardening • Growing Berries • Planting Fruit Trees • Composting • Soil Testing • Raised Bed Garden • Hydroponics • Planting Shrubs



The Garden Hour with MU Extension

MU Extension Horticulture Specialists from across the state will answer your garden questions! Topics include vegetables, flowers, lawns, fruit, ornamental, houseplants, trees, and landscapes.

FREE!!!
Zoom
Or
YouTube Livestream

<https://www.youtube.com/user/MUIPM>

Weekly
On Wednesdays
noon to 1 pm

Online programming remains an important educational tool. This includes MU Extension Garden Hour at noon on Wednesdays during the gardening season, horticulture education meetings, home gardening webinar, farmers market webinar series and commercial vegetable program. Participants who engaged in horticulture programming learned about insects, weeds, diseases, soil health and fertility, general plant care, and variety selection.

A monthly Garden Spade Newsletter reaches over 2,300 subscribers every month with a 20% increase in readership during 2023. Subscribe to the garden spade at <https://extension.missouri.edu/courties/cape-girardeau> or click the QR code at the right.





Health & Well-being

Bollinger County

Bollinger County Community Garden Funding

The Missouri Department of Social Services provided Community Services Block Grant (CSBG) funding to the University of Missouri to expand school and community garden efforts in ninety locations throughout the state in 2022, and an additional eighty-two gardens in 2023 including the Bollinger County Community Garden. The investment into community gardens creates sustainable opportunities to improve health and reduce the risk for chronic health conditions. The Bollinger County Community Garden received supplies totaling \$3,621.81 from the CSBG funding in 2023. Items received by the garden include a portable greenhouse, drip irrigation systems, garden hoses, raised beds, weed barrier, garden gloves, and hand tools. Bethany Bachmann served as the specialist communicating the need for supplies to state program leaders and assisted in procuring items for the garden as part of her work with the Supplemental Nutrition Assistance Program Education (SNAP-Ed).



Bethany Bachmann

**Field Specialist in
Nutrition and Health**

2023 Program Reach

3,540 Direct programming and engagement contacts

51,550 Indirect programming and engagement contacts including KFVS12 livestream views, news articles, the Garden Spade Newsletter, health fairs, meetings, and presentations

National Extension Association of Family and Consumer Sciences (NEAFCS) Awards and Presentations:

- 1st Place National and Central Region, Family Health and Wellness
- 1st Place Central Region, Environmental Education
- Poster presentation and concurrent session presentation on the Freeze It! Curriculum project at the NEAFCS Conference in Providence, RI



County highlights

Economic Development- Recycling Center

Extension Recycling Annual Review 2023

The center continues to be owned by the county, and leased to Bollinger County Recycling, Inc. The county commissioners have been very supportive through the years as we made the necessary changes to convert a livestock sale barn into a recycling center.

Our partnership with MERSGoodwill continues to provide for the salary of our manager/center worker. A new manager, Allen, was hired in August. He has settled in well with the job. Rogue, our cat (center mascot) has adjusted easily to the change in managers. Even though she is rarely seen, people visiting the center hear her loud voice, and often leave food or treats for her.

Our center library provides reading material for our recyclers or anyone who wants to receive or leave a book. The book selection changes regularly.

The center continues to be a work in progress in many ways. We have continued to clear additional space for storage. Because of a depressed recycling market, we have only sold one trailer of recycled items this year, in April. We have filled the new cleared space with stored bales and gaylords until the market improves. We hope for improved prices in 2024.

Our spring fundraiser's focus was on safety and security at the trailer and center. With donations from local businesses, individuals and a match from Modern Woodmen, we raised \$1,985.17. With this, we were able to purchase a surveillance system for the center and better interior lighting for the recycling trailer. We have seen a significant decrease in littering/dumping at the center since this has been in place.

This spring we placed our recycling trailer in Marble Hill. As a result, this was the first year since 2009, that we did not have scheduled county-wide collection events. Marble Hill had always been the most active collection site, so we felt a permanent collection site in the city would meet the greatest need. The city allows us to park on city property and helps maintain the site. Without this support, the trailer placement would not have been possible. The city's agreement to transport the trailer to the center to be unloaded was another necessary component. Partnership with the city has allowed recycling to grow in the city and county.

In December we learned that our primary buyer, Southern Recycling, has been sold. We have reached out to the new owners. It appears that they are happy to work with an organization even as small as ours. We hope to visit the new owners in the new year to establish the same strong relationship that we had with the previous owners.



[This Photo](#) by Unknown Author is licensed under [CC BY-SA](#)

UNIVERSITY OF MISSOURI EXTENSION

2023 Update

Sarah J. Higgins
Field Specialist in Natural
Resources
314-971-4826
sarah.higgins@missouri.edu



Covering Bollinger, Butler, Cape Girardeau, Carter, Crawford, Dent, Dunklin, Howell, Iron, Jefferson, Madison, Maries, Mississippi, New Madrid, Oregon, Pemiscot, Perry, Phelps, Pulaski, Reynolds, Ripley, Scott, Shannon, St. Francois, Ste Genevieve, Stoddard, Texas, Washington, and Wayne Counties

About me & 2023 in review

Hello all! I started my position as a Natural Resources Specialist on July 5th, 2023. I am based out of Phelps County in Rolla, and I serve 28 other counties in southeast Missouri. I got the opportunity to work in this part of the Ozarks while pursuing my undergraduate degree Environmental Science from Mizzou and loved getting to explore the beautiful landscapes in this region. I moved back to Missouri after receiving my master's in Environmental, Soil, & Water Science from West Virginia University, and I feel so grateful to be back. I'm excited to work with the people in this region to conserve our beautiful natural resources.

Since starting in July, I've gotten the opportunity to meet many others in the area involved in natural resources, including private landowners, Missouri Department of Conservation employees, and Natural Resources Conservation Service employees, people involved in the timber industry, and other Extension professionals. I'm looking forward to developing these partnerships more in 2024 and collaborating on programs to deliver in southeast Missouri. Please contact me to talk more about what kinds of natural resource programming you'd like to see in your county. Looking forward to working more with you all in 2024!



Field site demonstrating the need for timber management at the MO Tree Farm Conference.



Invasive bush honeysuckle from an invasive species workshop in Versailles, MO. Other invasive species discussed included autumn olive, multiflora rose, wintercreeper, sericea lespedeza, princess tree, and eastern redcedar (a native field invader).

Looking at 2024

Here are a few programs to keep an eye out for in 2024. I also hope to visit more counties and attend some Extension council meetings, so please reach out if you'd like me to come!

- Restarting Women Owning Woodlands program. We hope to have social hikes and monthly virtual meetings.
- White Oak, Whiskey, and Wine webinar series at 12 pm on Mondays in January.
- Hybrid (virtual & in-person) Succession Planning workshop on February 29th.
- Invasive Species workshop in March.
- Forest health webinar series in early April, followed by a forest health field day on April 13th.

Please contact me for any details related to the programs above. I will send more information and updates on programs throughout the year. I'm eager to work with you all next year!

County highlights

MU Extension Statewide Economic Impact

2023 UM Systemwide Impact Data Sheets

Bollinger County



University of Missouri System
COLUMBIA | KANSAS CITY | ROLLA | ST. LOUIS

UM System Footprint in the county in 2022



FY22 county students

9 students

- 7 Undergraduates
- 2 Graduate and professional students
- 8 Full-time students
- 1 Part-time student



County breakdown

MU

- 4 students
- 57 alumni
- 4 employees

UMKC

- 0 students
- 2 alumni
- 0 employees

Missouri S&T

- 5 students
- 11 alumni
- 0 employees

UMSL

- 0 students
- 18 alumni
- 0 employees



County population: 10,758



County employees and retirees

4 people employed by UM

- 4 Campuses



County alumni

Selected school alumni

- 4 Nursing
- 11 Health Professions
- 1 Dentistry
- 1 Pharmacy
- 1 Optometry
- 2 Veterinary Medicine
- 21 Agriculture
- 14 Engineering
- 4 Law

Alumni teaching K-12

- 7 teachers
- 4.6% of all district teachers



County services provided

Health care (FY22)

- 12 in-state patients seen at MU Health Care, with \$9,689 of uncompensated care
- MU Health Care's Missouri Telehealth Network recorded 13 visits to 7 patients having ZIP codes associated with the county

Extension (2022)

- 2,968 Total educational contacts from MU Extension to residents of the county, including:
- 20 contacts related to productive farming, better gardening, and managing natural resources
- 2,948 contacts related to healthy eating and aging, strengthening families, personal finance, or youth development



County properties and offices

MU Extension in: Bollinger County